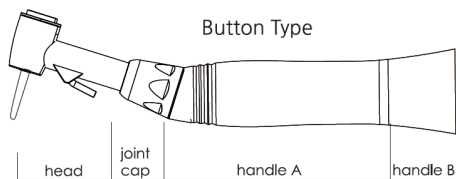
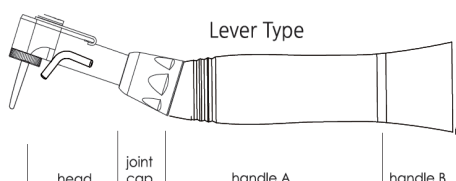


OS20P Implant Handpiece

Please read instruction manual carefully before using and keep this instruction manual for future reference.



Button Type	
Gear ratio	Weight
20:1	61g
16:1	61g
64:1	65g
32:1	61g



Lever Type	
Gear ratio	Weight
20:1	60g
16:1	60g
64:1	65g
32:1	60g

*standard coupling dimensions (ISO 3964)

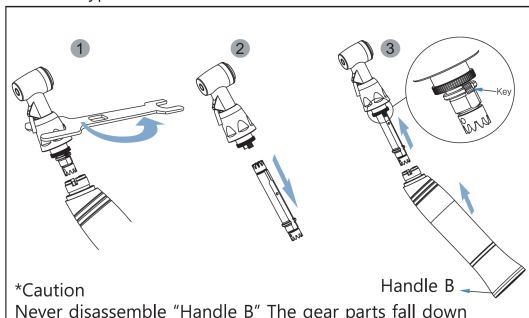
Components

Angle, spanner, instruction manual

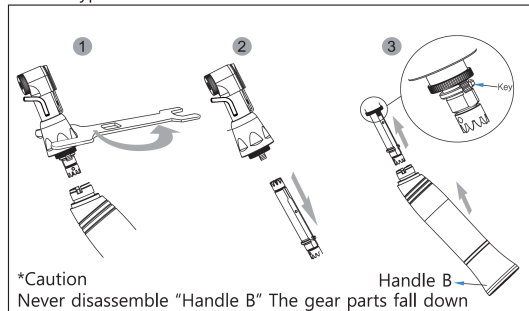
Disassembling the head

1. Put the spanner in the joint cap and turn it to counter clock direct to open.
2. Put out the gear.
3. Clean and lubricate the parts.
4. Reassembling- Fit the gear to the „Key“ and put into the head. Check if the gear fits to head assembly and close smoothly. Assemble the head part to the body. Tighten the joint cap with the spanner.

- Button Type



- Lever Type



Changing the Bur

- Button type : take off the bur pressing the button and change a bur - Lever type : turn the lever to counter clock direction and change a bur if Be sure use a designated bur in ISO. Do not use the rusty or band bur which is causing excessive abrasion. Follow the provided safety speed and precaution by bur manufacturer.

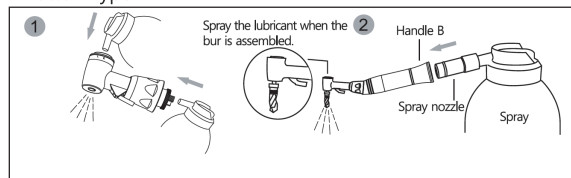
Clean

Rotate the head in the water about 10 seconds with high speed to remove the remains (blood, physiologic saline solution, etc.) Remove the water with the soft cloths or paper towel and then lubrication as following.

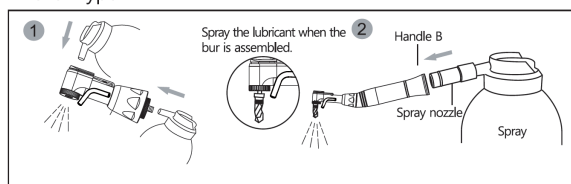
Lubrication

Spray to the assembling motor part about 2-3 seconds after inserting the lubrication spray nozzle to the assembling part (the end of angle). In case the head is heavy contaminated, disassemble the joint cap using the provided spanner and then insert spray nozzle tip to head, spray to head directly.

- Button Type



- Lever Type



- Fit the gear correctly after lubrication.
- The gear may be damaged in case of misassembling.
- When the continuous operation, please inject oil per hour.
- Make sure to grasp the handpiece firmly during the lubrication to prevent popping out because of the pressure from the spray.

Autoclave

1. Clean all components carefully in autoclave
2. After wipe the dust, wash the surface of angel with alcohol swab or paper towel.
3. Put the angle in sterilization bag and seal.
4. Put the sterilization bag in sterilization devices and operate at 132 about 4 minutes.

Sterilization	Temperature	Time	Drying time
Moist heat sterilization	134°C	4 min	20 min



Attention

- Do sterilize the product more than one time certainly when opening it.
- Make sure to clean the angle thoroughly. The remains such as blood are likely to stick on the product during sterilization, which brings the breakdown.
- Please pay attention to safety always and do not misuse.
- Disassemble when the product stops completely.
- Unauthorized modification and disassembling is prohibited.
- Do not drop the handpiece which may cause damage to the product.
- Fit the angle to the end of the e-type shift.
- Check the handpiece running, especially vibration, noise and increasing of temperature.
- If there is any problem, please stop running immediately, and contact to the distributor/seller or manufacturer. Supplier is not responsible for the accident causing by not blowing instruction manual
- Design and specification of the product can be changed for improving without prior notice.
- The user is responsible for the operation and maintenance of the product.



This product is medical devices.



B.A. INTERNATIONAL LTD.
Unit 9, Kingsthorpe Business Centre,
Studland Road, Kingsthorpe,
Northampton NN2 6NE U.K.
Rev.2016/08

